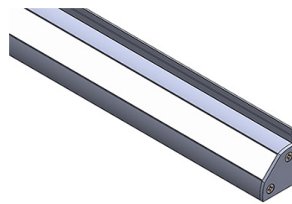


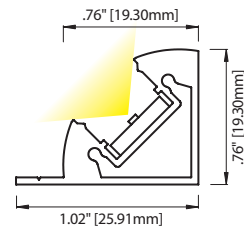
2QL QUARTER ROUND EXTRUSION - LENSED

2QL: IP40 | Quarter Round extrusion fits snugly into corners for bright, even linear lighting. UL Listed dry/damp. Includes Nichia LEDs in choice of 21 LED Board options. See lumen outputs, CCTs, wattage and other variables on Linear Fundamentals.

Available in Silver, Black or Bronze Anodized, White Powder Coated, or Custom Finishes. Choice of Clear Acrylic lens (standard), 3 Opal diffusion lenses, or three focusing lenses L2 (18° - 31°), L3 (30° - 42°) or Lens 4 (78° - 82°). Photometrics vary based on CCT and lensing; see vltcorp.com for output conversion and other data specific to your fixture choices.



(Beam Angle based on 2QL fixture with Clear Acrylic lens)



ELL- 2QL -

	LED	CCT	Finish	Lens Options	Wire Exit	Listings & Options							
STANDARD PITCH	1720	260 lm/ft, 1.8 w/ft, 83+ CRI	20	2000°K	AL Silver Anodized	PG Clear Acrylic	<table border="1"> <tr> <td>UL</td> <td>UL Listed</td> <td>cULus</td> </tr> <tr> <td>CE</td> <td>CE Marked (RoHS)</td> <td>CE</td> </tr> </table>	UL	UL Listed	cULus	CE	CE Marked (RoHS)	CE
	UL	UL Listed	cULus										
	CE	CE Marked (RoHS)	CE										
	2730	397 lm/ft, 2.9 w/ft, 83+ CRI	22	2200°K	BL Black Anodized	L2 Lens 2 (26° - 32°)							
	4740	528 lm/ft, 3.7 w/ft, 83+ CRI	25	2500°K	BZ Bronze Anodized	L3 Lens 3 (50° - 51°)							
	5760	665 lm/ft, 4.9 w/ft, 83+ CRI	27	2700°K	WH White Powder Coat	L4 Lens 4 (89° - 92°)							
	6760	875 lm/ft, 6.5 w/ft, 83+ CRI	30	3000°K	C Custom	OP1 Opal 1, Frosted							
	3720	223 lm/ft, 1.8 w/ft, 95+ CRI	35	3500°K		OP2 Opal 2, Medium							
	3740	430 lm/ft, 3.5 w/ft, 95+ CRI	40	4000°K		OP3 Opal 3, Heavy							
	3760	609 lm/ft, 5.2 w/ft, 95+ CRI	45	4500°K									
3790	621 lm/ft, 6.9 w/ft, 98 CRI ¹	50	5000°K										
PITCHLESS	5140	287 lm/ft, 2.2 w/ft, 83+ CRI	20/30	2000°K/ 3000°K ²									
	5160	571 lm/ft, 4.3 w/ft, 83+ CRI	25/40	2500°K/ 4000°K ²									
	5180	920 lm/ft, 6.9 w/ft, 83+ CRI	30/40	3000°K/ 4000°K ²									
	3140	237 lm/ft, 2.2 w/ft, 95+ CRI	35/45	3500°K/ 4500°K ²									
	3160	469 lm/ft, 4.3 w/ft, 95+ CRI											
	3180	773 lm/ft, 6.9 w/ft, 95+ CRI											
	3150	202 lm/ft, 2.2 w/ft, 98 CRI ¹											
	3170	404 lm/ft, 3.9 w/ft, 98 CRI ¹											
	3190	710 lm/ft, 6.9 w/ft, 98 CRI ¹											
	7180	750 lm/ft, 6.9 w/ft, 83+/95+ CRI ²											
	5133	315 lm/ft, 3.4 w/ft, 87 CRI ¹											
5163	548 lm/ft, 6.6 w/ft, 87 CRI ¹												

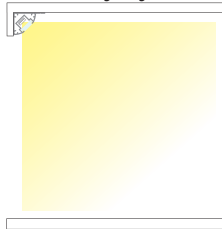
- Standard
- HI CRI
- Pitchless/Standard
- Pitchless/Hi CRI
- Pitchless/Dual Color
- Pitchless/Narrow Focus
- Ultra HI CRI

¹ Not Available in 20K, 22K or 25K CCT
² 7180 Boards Only: CRI Varies Based on CCT Combination

Fixture Length

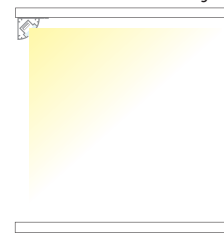
See Fixture Length and Wattage Table. Choose the correct Code number for the LED board and fixture length of your choice or specify Custom Length as follows: C (12.25") or C [311mm]

2QL tucked behind lighting valance

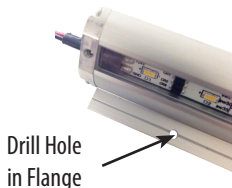


2QL's self-contained mounting flange allows the fixture to fit tightly into corners, with a 94° beam angle and wide field angle for fully lighting shelf and undercabinet spaces. 2QL can tuck neatly behind a lighting valance, as illustrated at left, or if no valance is provided, 2QL can mount flush with the front edge of the shelf or cabinet. The fixture's slim, finished back surface ensures an attractive presentation, as shown in the photos to the right. With black, white, silver, bronze or custom finish options, 2QL can blend in with or accent a wide range of cabinetry finishes.

2QL mounted on shelf edge



When visible, the slim 2QL fixture adds an attractive accent to cabinetry



Drill Hole in Flange

The 2QL flange is scored for easy drilling; mounting holes should be drilled approximately every 20" (minimum two holes per fixture). The 2QL fixture can also be mounted using VHB tape.

