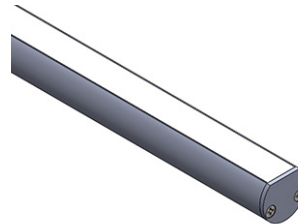


3RL CHOICE LARGE ROUND EXTRUSION - LENSED

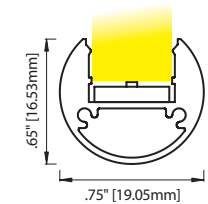
3RL Choice: IP40 | Round extrusion for linear lighting applications. UL Listed dry/damp. Includes selection of 8 LED Boards: 3 with Nichia LEDs on a Standard Pitch; 4 with EssentialLEDs Choice LEDs on a Narrow Pitch, and 1 with Choice LED's with Dim-to-Warm (3000°K to 1800°K) capability when used with a HELD-5n1 driver. See lumen outputs, CCTs, wattage and other variables on Choice Linear Fundamentals.

Available in Silver or Black Finishes. Choice of Clear Acrylic lens (standard), 3 Opal diffusion lenses, or three focusing lenses L2 (26° - 32°), L3 (50° - 51°) or L4 (89° - 92°).

AVAILABLE IN LENGTHS UP TO 143.3" [3640MM]



(Beam Angle based on 3RL fixture with Clear Acrylic lens)



LED		Finish		Wire Exit		Listings & Options	
1435	288 lm/ft, 2.7 w/ft, 90+ CRI ²	AL	Silver Anodized	WE1	Default	UL	UL Listed
2435	384 lm/ft, 3.7 w/ft, 90+ CRI ²	BL	Black Anodized	C	Custom	CE	CE Marked (RoHS)
3435	478 lm/ft, 5.5 w/ft, 90+ CRI ²						
4435	610 lm/ft, 5.8 w/ft, 90+ CRI ²						
1320	222 lm/ft, 2.0 w/ft, 95+ CRI ¹						
2320	335 lm/ft, 2.8 w/ft, 95+ CRI ¹						
4320	590 lm/ft, 5.9 w/ft, 95+ CRI ¹						
7435	455 lm/ft, 5.5 w/ft, 90+ CRI ⁵						
CCT		Lens Options		Fixture Length			
23	2300°K	PG	Clear Acrylic	See Fixture Length and Watage Table. Choose the correct Code number for the LED board and fixture length of your choice or specify Custom Length as follows: C (12.25") or C [311mm]			
27	2700°K	L2	Lens 2 (26° - 32°)				
30	3000°K	L3	Lens 3 (50° - 51°)				
35	3500°K	L4	Lens 4 (89° - 92°)				
40	4000°K	OP1	Opal 1, Frosted				
45	4500°K	OP2	Opal 2, Medium ³				
18/30	1800°K/ 3000°K ⁶	OP3	Opal 3, Heavy ^{3, 4}				

- Narrow Pitch Choice LEDs
- Standard Pitch Nichia LEDs
- Dim-to Warm Choice LEDs

¹ Not Available in 23K CCT

² Not Available in 45K CCT

⁵ Requires a HELD-5n1 Driver

⁶ 7435 Boards Only: CRI varies based on CCT combination.

³ Will provide full diffusion

⁴ Not Title 24 JA8-2016 compliant

See Special Mounting Options for more information about specifying 2RL fixtures in Display Case configurations.

Basic and Free Standing Fixture Accessories - See Mounting Options For Full Options			
ELL - AC - 3RL - PC	ELL - AC - 3RL - LC	ELL - AC - 3RL -SALC	ELL - AC - 3RL - MRC
Plastic Mounting Clip; Fixture extrusion rotates into clip. Screws to mounting surface. Raises fixture 0.13" (3.18mm). Allows 30° rotation. Allow 1 per 12" (min. 2 per fixture); See Mounting Options.	Locking Adjustable Mounting Clip; Screws to mounting surface. Raises fixture 0.13" (3.18mm). Full rotation with locking screw. Finishes to match fixture. Allow 2 per fixture (48" max span). See Mounting Options.	Locking Adjustable Mounting Clip with Self-Adhesive. Raises fixture 0.13" (3.18mm). Full rotation with locking screw. Finishes to match fixture. Allow 2 per fixture (48" max span). See Mounting Options.	Metal Mounting Clip; Fixture extrusion rotates into clip. Countersunk screw-hole so fixture sits flush to mounting surface. Allows 60° rotation. Allow 1 per 12" (min. 2 per fixture); Polished Nickel Finish; See Mounting Options.