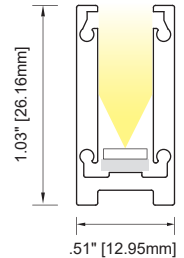
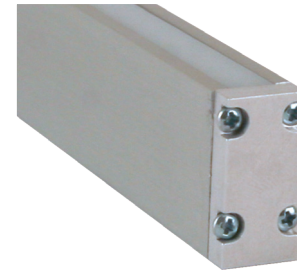


New! 4SL CHOICE MEDIUM SQUARE TALL EXTRUSION - LENSED

4SL Choice: IP40 | Square extrusion with 1" depth capable of full diffusion of LED diodes. Use decoratively for a slim (9/32") visible line of diffused light, or light up polished surfaces without reflected diodes. UL Listed dry/damp. Includes selection of 3 LED Boards with EssentialLEDs Choice LEDs on a Narrow Pitch. See lumen outputs, CCTs, wattage and other variables on Choice Linear Fundamentals.

Available in Silver or Black Finishes. Choice of 3 Opal diffusion lenses. Opal 2 (Medium) or Opal 3 (Heavy) required for full diffusion. Photometrics vary based on CCT and lensing; see vltcorp.com for conversion and other data specific to your fixture choices.



AVAILABLE IN LENGTHS UP TO 95.28" [2420MM]

ELC- 4SL -

LED		Finish		Wire Exit		Listings & Options	
1435	288 lm/ft, 2.7 w/ft, 90+ CRI	AL	Silver Anodized	WE1	Default	UL	UL Listed
2435	384 lm/ft, 3.7 w/ft, 90+ CRI	BL	Black Anodized	C	Custom	CE	CE Marked (RoHS)
3435	478 lm/ft, 5.5 w/ft, 90+ CRI	C	Custom			MAG	Magnetic Mount

CCT		Lens Options		Fixture Length	
23	2300°K	OP1	Opal 1, Frosted	See Fixture Length and Wattage Table. Choose the correct Code number for the LED board and fixture length of your choice or specify Custom Length as follows: C (12.25") or C [311mm]	
27	2700°K	OP2	Opal 2, Medium ¹		
30	3000°K	OP3	Opal 3, Heavy ^{1,2}		
35	3500°K				
40	4000°K				

¹ Will provide full diffusion
² Not Title 24 JA8-2016 compliant

Narrow Pitch Choice LEDs

Fixture Accessories

ELL - AC - 4SL - MC	ELL - AC - 4SL - AMC	ELL - AC - S123 - AB	ELL - AC - 4SL - WCR - AL	Factory Installed; See Options Above
Fixed Metal Mounting Clip Fixture extrusion snaps into clip. Allow 1 per 12" (min. 2 per fixture). See Mounting Options.	Adjustable Metal Mounting Clip Offset screws allow flush mounting. Bends to desired angle. Allow 1 per 12" (min. 2 per fixture). See Mounting Options.	Adjustable Metal Bracket for use with Fixed Metal Mounting Clip (one bracket per clip). 30° adjustability. Raises fixture 3/8" (9.52mm). Bracket allows repeated angle adjustments and easier angle adjustments in hard-to-reach areas like ceiling covers. See Mounting Options.	Wall / Ceiling Mounting Rough-in; Specify length to match fixture length. 8-32 flat head screw allows height adjustment for flush installation. (Not walk-over or drive-over rated). See Special Mounting Options.	Magnetic Mount Factory-installed magnets hold fixture securely to ferrous surface or accessory Steel Mounting Plates (see Mounting Options); 3 magnets per foot, factory installed. Magnets protrude 0.09" [2.3mm] above rear surface of extrusion.