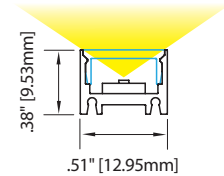
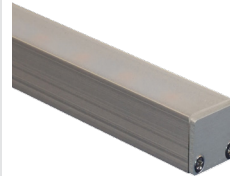


8CL CHOICE MEDIUM SQUARE COMPACT EXTRUSION - EDGE TO EDGE LENS

8CL Choice: IP40 | Compact medium square extrusion for linear lighting applications. Slim extrusion wall (0.15") and edge-to-edge snap-in lensing for extra lumen output. UL Listed dry/damp. Includes selection of 8 LED Boards: 3 with Nichia LEDs on a Standard Pitch; 4 with EssentialLEDs Choice LEDs on a Narrow Pitch, and 1 with Choice LEDs with Dim-to-Warm (3000°K to 1800°K) capability when used with a HELD-5n1 driver. See lumen outputs, CCTs, wattage and other variables on Choice Linear Fundamentals.

Available in Silver or Black Finishes. Choice of Clear Acrylic lens (standard), 3 Opal diffusion lenses, or three focusing lenses L2 (26° - 32°), L3 (50° - 51°) or L4 (89° - 92°).

AVAILABLE IN LENGTHS UP TO 143.3" [3640MM]



ELC- 8CL -

LED

1435	288 lm/ft, 2.7 w/ft, 90+ CRI ²
2435	384 lm/ft, 3.7 w/ft, 90+ CRI ²
3435	478 lm/ft, 5.5 w/ft, 90+ CRI ²
4435	610 lm/ft, 5.8 w/ft, 90+ CRI ²
1320	222 lm/ft, 2.0 w/ft, 95+ CRI ¹
2320	335 lm/ft, 2.8 w/ft, 95+ CRI ¹
4320	590 lm/ft, 5.9 w/ft, 95+ CRI ¹
7435	455 lm/ft, 5.5w/ft, 90+ CRI ⁵

- Narrow Pitch Choice LEDs
- Standard Pitch Nichia LEDs
- Dim-to Warm Choice LEDs

¹ Not Available in 23K CCT

² Not Available in 45K CCT

⁵ Requires a HELD-5n1 or Lutron Driver

Finish

AL	Silver Anodized
BL	Black Anodized

CCT

23	2300°K
27	2700°K
30	3000°K
35	3500°K
40	4000°K
45	4500°K
18/30	1800°K/3000°K ⁶

⁶ 7435 Boards Only: CRI varies based on CCT combination

Wire Exit

WE1	Default
C	Custom

Lens Options

PG	Clear Acrylic
L2	Lens 2 (26° - 32°)
L3	Lens 3 (50° - 51°)
L4	Lens 4 (89° - 92°)
OP1	Opal 1, Frosted
OP2	Opal 2, Medium ³
OP3	Opal 3, Heavy ^{3,4}

³ Will provide full diffusion

⁴ Not Title 24 JA8-2016 compliant

Fixture Length

See Fixture Length and Wattage Table. Choose the correct Code number for the LED board and fixture length of your choice or specify Custom Length as follows: C (12.25") or C [311mm]

Listings & Options

UL	UL Listed	
CE	CE Marked (RoHS)	
MAG	Magnetic Mount	

Fixture Accessories

ELL - AC - 8CL - MC



Fixed Metal Mounting Clip. Fixture extrusion snaps into clip. Allow 1 per 12" (min. 2 per fixture). See Mounting Options.

ELL - AC - 2SL - AMC



Adjustable Metal Mounting Clip Offset screws allow flush mounting. Bends to desired angle. Allow 1 per 12" (min. 2 per fixture). See Mounting Options.

ELL - AC - S123 - AB



Adjustable Metal Bracket for use with Fixed Metal Mounting Clip (one bracket per clip). 30° adjustability. Raises fixture 3/8" (9.52mm). Bracket allows repeated angle adjustments, and easier angle adjustments in hard-to-reach areas like ceiling coves. See Mounting Options.

Factory Installed; See Options Above



Magnetic Mount Small, strong, factory installed magnets recess into rear side of fixture extrusions for mounting of fixture onto suitable ferrous surface or accessory Steel Mounting Plates (see Mounting Options). 3 magnets per foot. Magnets protrude 0.09" [2.3mm] above rear surface of extrusion.